

# Attaining Passwordless Nirvana

Balancing friction with security



**arcu**lix  
by **SECUREAUTH**



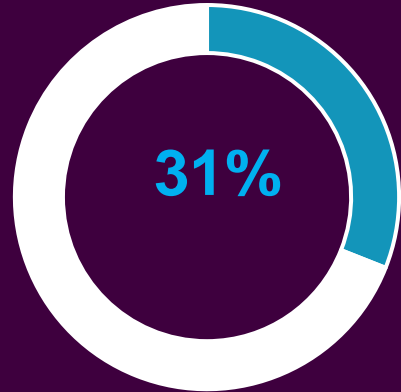
# ESG Report

Highlights from the March 2022 IAM report

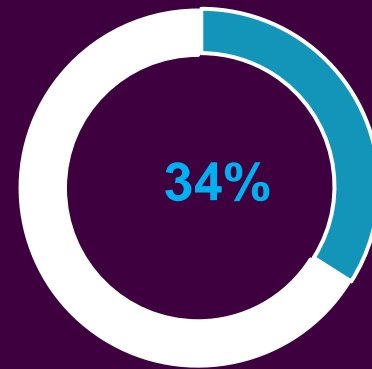
# ESG Report: Passwordless is becoming strategic

Get report here: <https://www.secureauth.com/resource/esg-report-2022/>

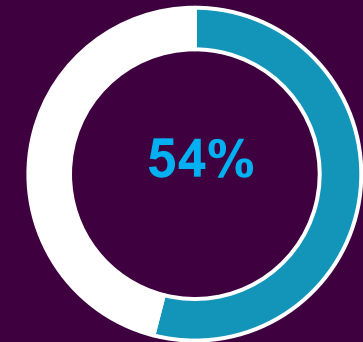
Passwordless is Our  
Top Identity-related  
Activity



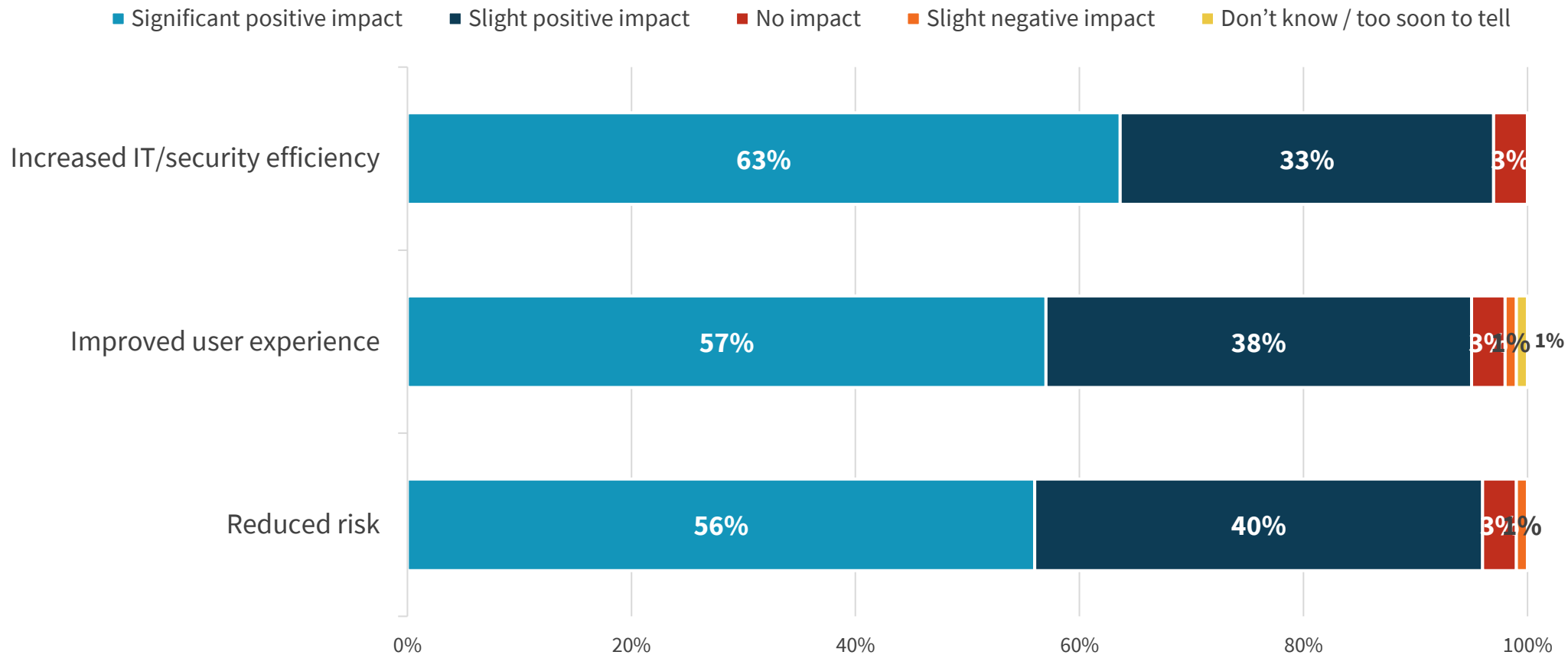
Passwordless is  
Among Our Top-  
three Identity-  
related Activities



We have Started to  
Transition to  
Passwordless  
Technologies

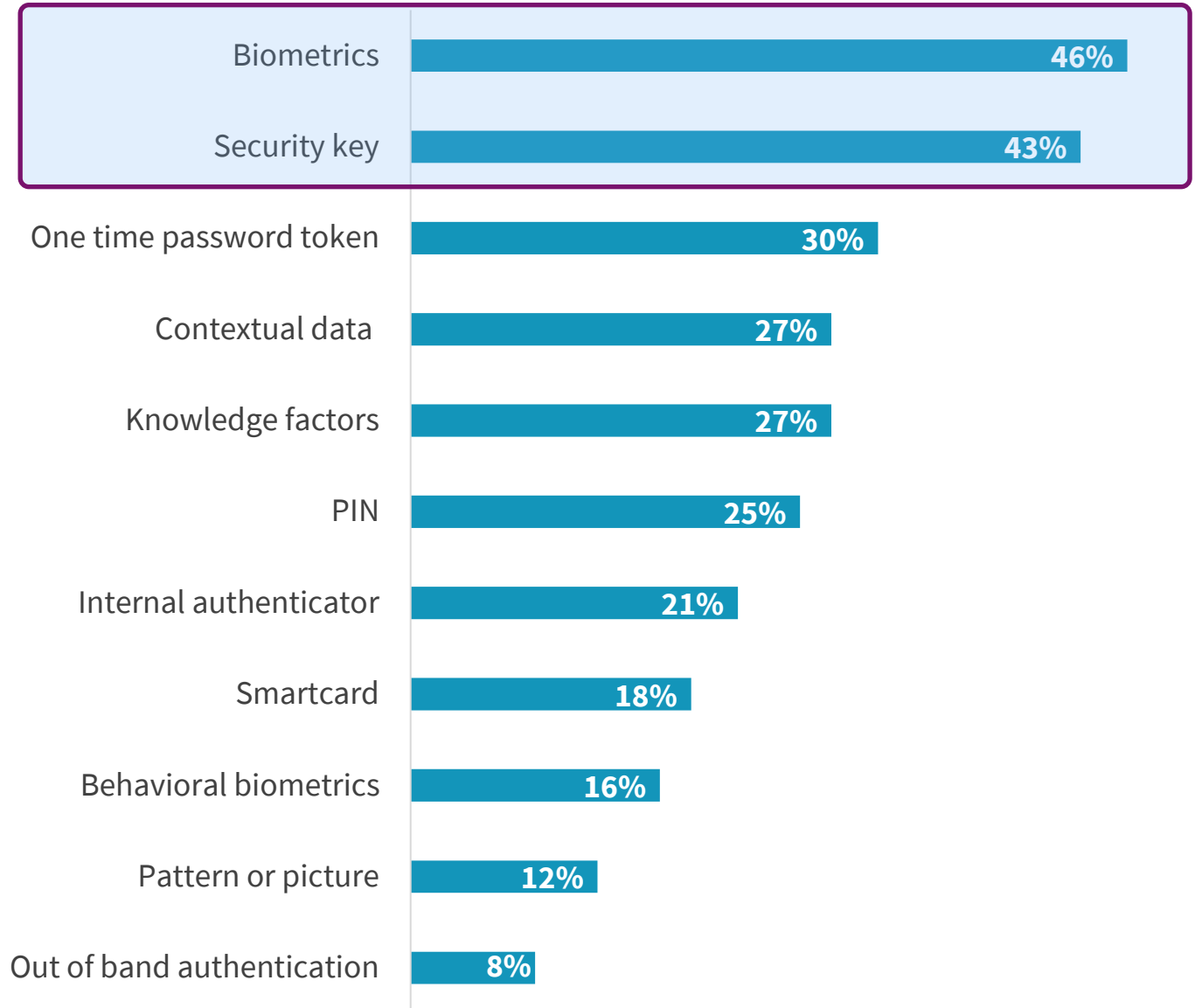


# ESG Report: Passwordless reduces risk, increases IT / Security Efficiency (and improves user experience)



# ESG Report

## Biometrics and Security Keys are Most Popular Passwordless Authentication Methods

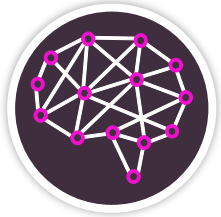




# Balancing Friction with Security

Meeting today's needs with new approaches

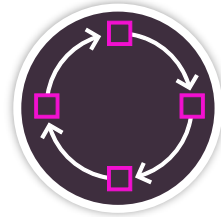
# Today's challenges



## Digital Acceleration

---

- Remote work is the new norm
- Identity beyond just people and identity relationships
- Consumerization changing end user expectations



## Business Demands

---

- The need to meet compliance requirements
- Maintain legacy while innovating and embracing cloud
- M&A yielding 'stitched' together and complex enterprises

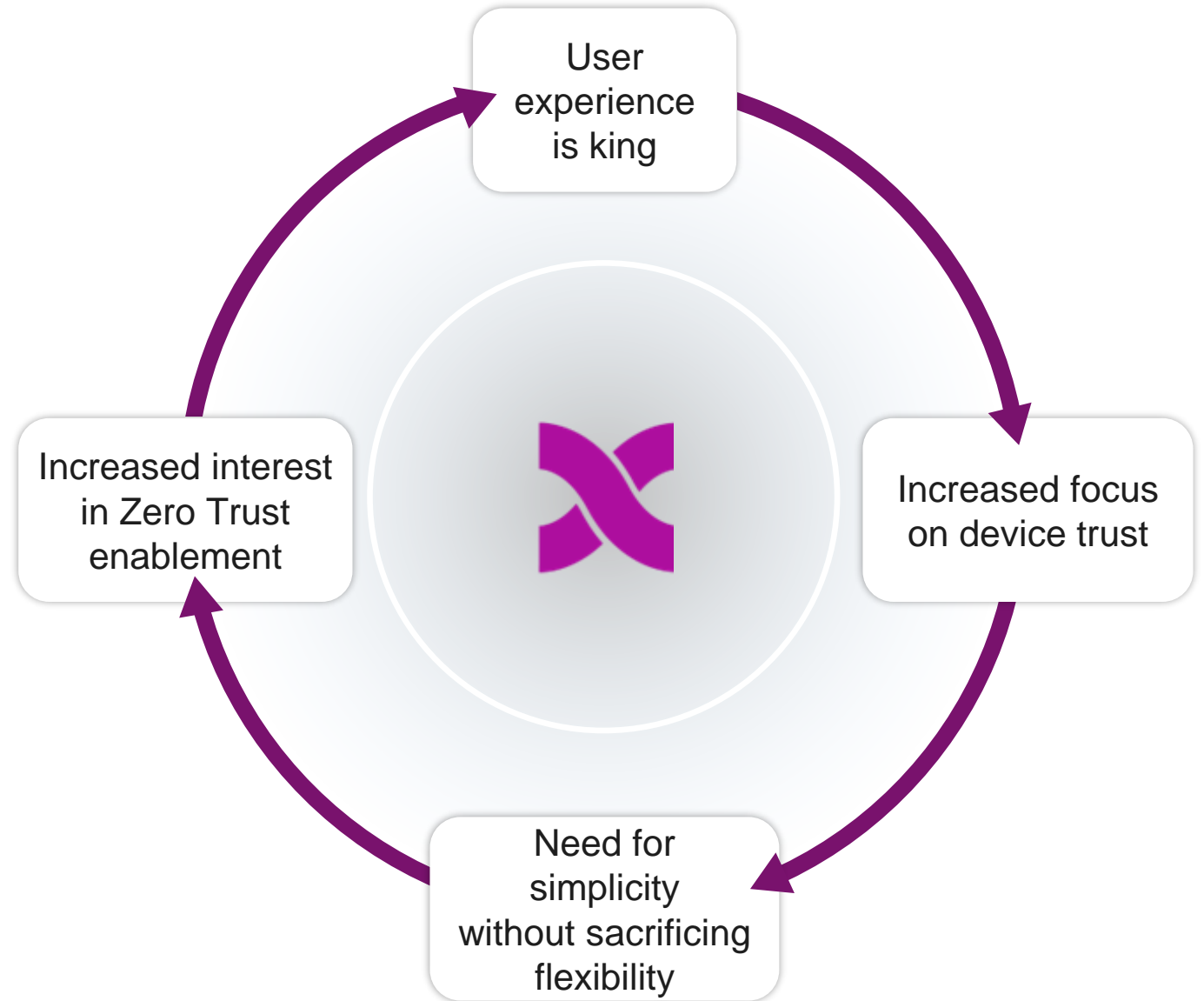


## Threat Environment

---

- More incentives driving bad actor innovation & breaches
- Identity has become the primary attack surface
- 3rd party risk surface area expanding

# Today's expectations





## Existing solutions aren't sufficient

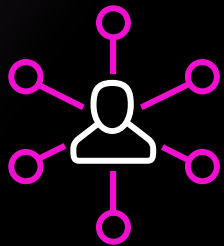


- Minimal protection and visibility after **initial authentication**
- **2F security** is temporal, causes high friction, and can be easily intercepted during transmission
- **MFA** lacks context and relies on too few attributes
- **Biometrics** can be spoofed
- Gap between user **convenience & security**
- Current desktop, browser and application SSO and Strong Auth are **disjointed**

# Strong presence since 2006

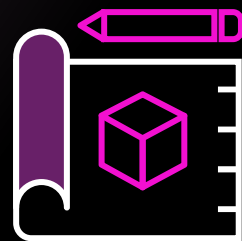
**38M+**

Users



**47**

Patents



**97%+**

Eliminated Account  
Takeovers



**28M+**

Daily Secured  
Authentications





While many vendors claim to help, no one is providing a truly passwordless experience that bridges the gap between cloud, on-prem, hybrid, and multi-cloud environments.



# What Arculix Does

## Secure Admin Control



### Secure Access

Advanced mobile, desktop, and endpoint solutions



Broad factor support options



Adaptive risk-based MFA

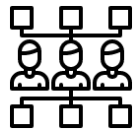


Continuous identity analytics



### Balance Risk & UX

Deliver the right journey to the right users



Point and click orchestration



Low/no-code integrations



Control: Re-authN, step-up, terminate

## Seamless End-User Experience

### Create Frictionless Logins



Strong customer, workforce and non-employee experience



Passwordless Desktop SSO



Continuous identity validation



Seamless trust-based access

### Enable Self-Service



Convert your biggest threat (people) into a weapon



Self-service Password reset



Mobile control of access and session

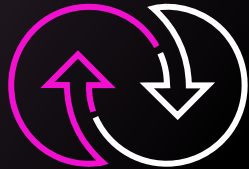


End user risk reporting

# Arculix Differentiators

## Frictionless

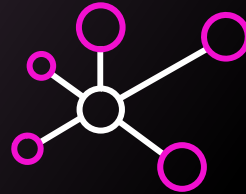
---



- Realize a passwordless user experience (without MFA fatigue)
- Secure all identities across all systems through each user's digital journey with unique digital DNA

## Extensible

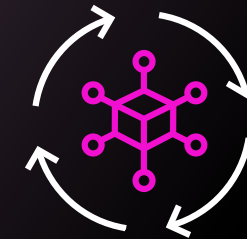
---



- Support large, complex, regulated organizations
- Deliver SaaS, on-prem, hybrid
- Capitalize on existing investments by augmenting your current IDP
- Point and click identity orchestration

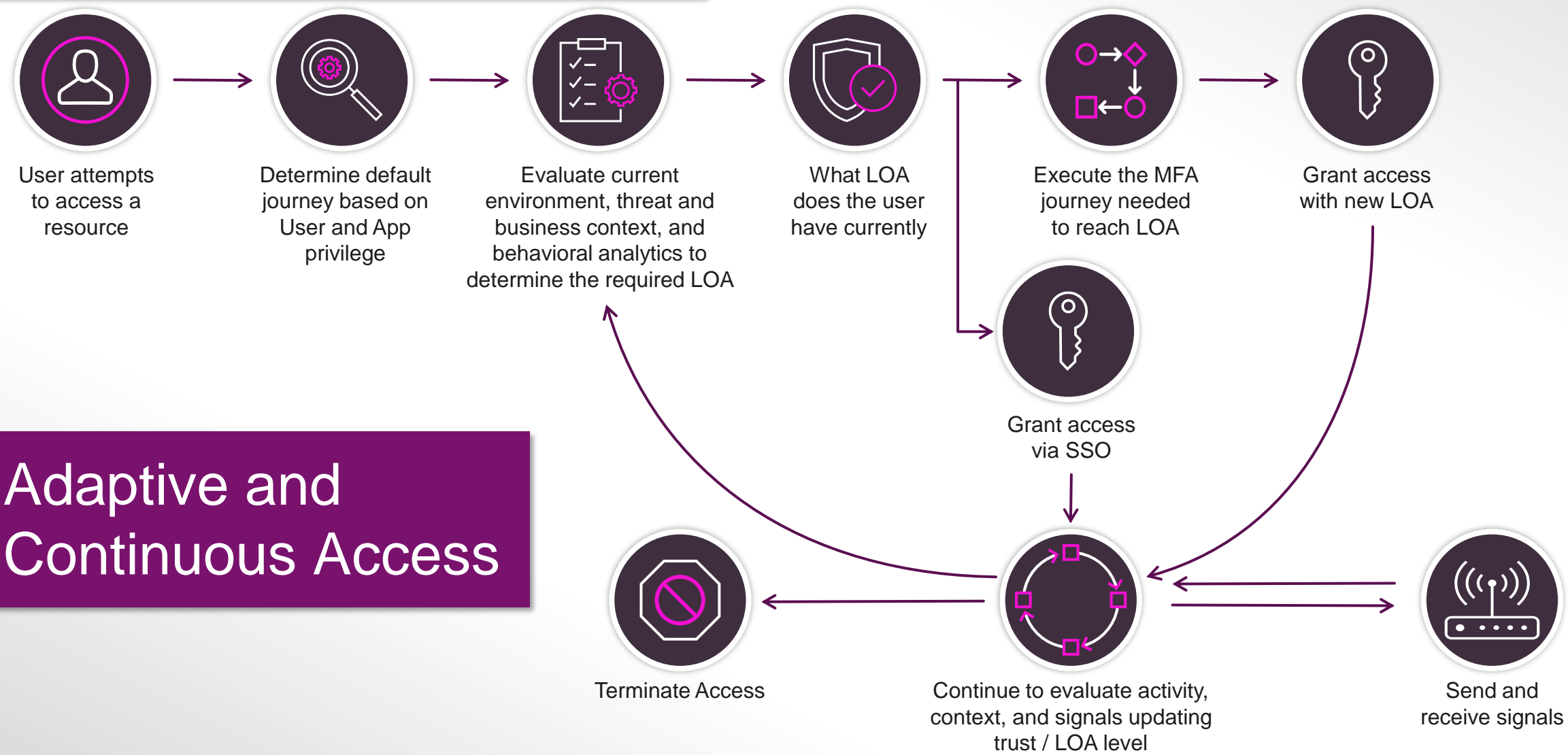
## Continuous

---



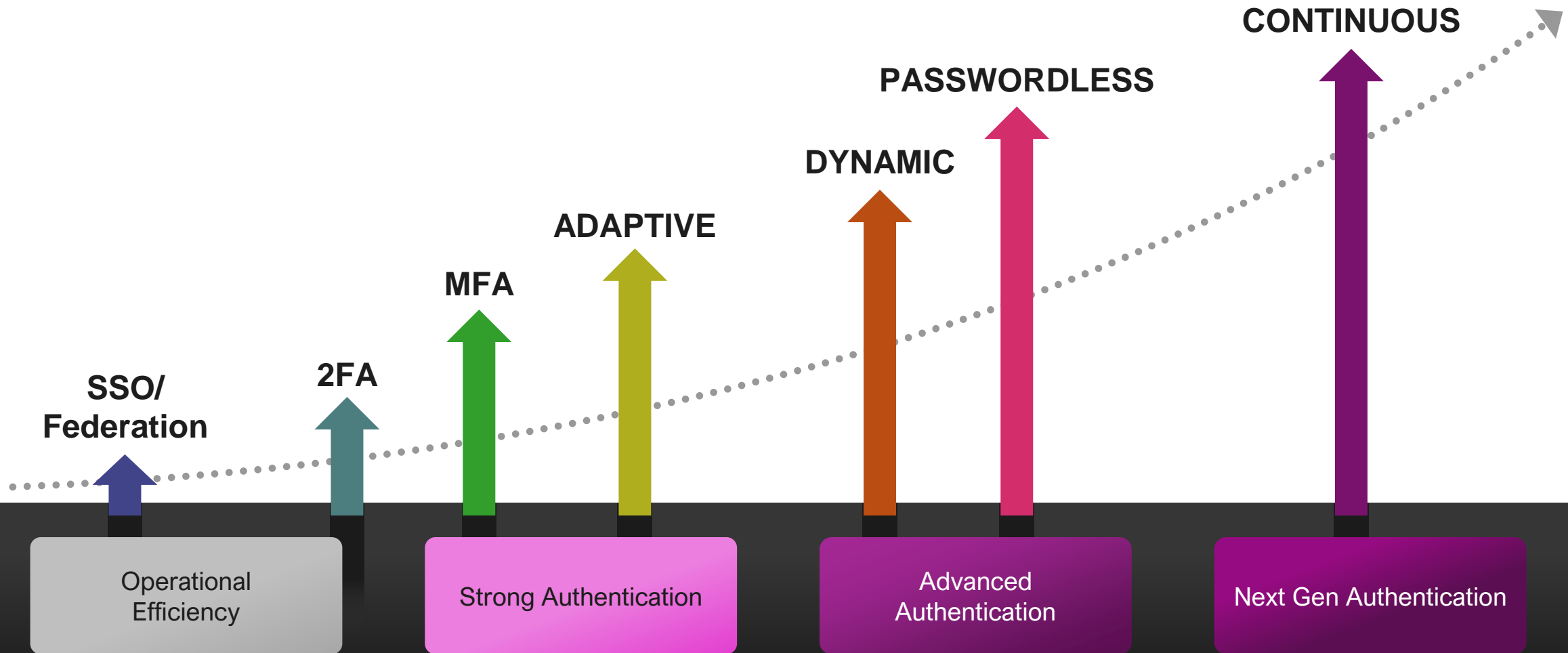
- Deliver the right user journey to the right users simply via
- Flexible, adaptive policies
  - Behavioral modeling

# Balancing Friction with Security

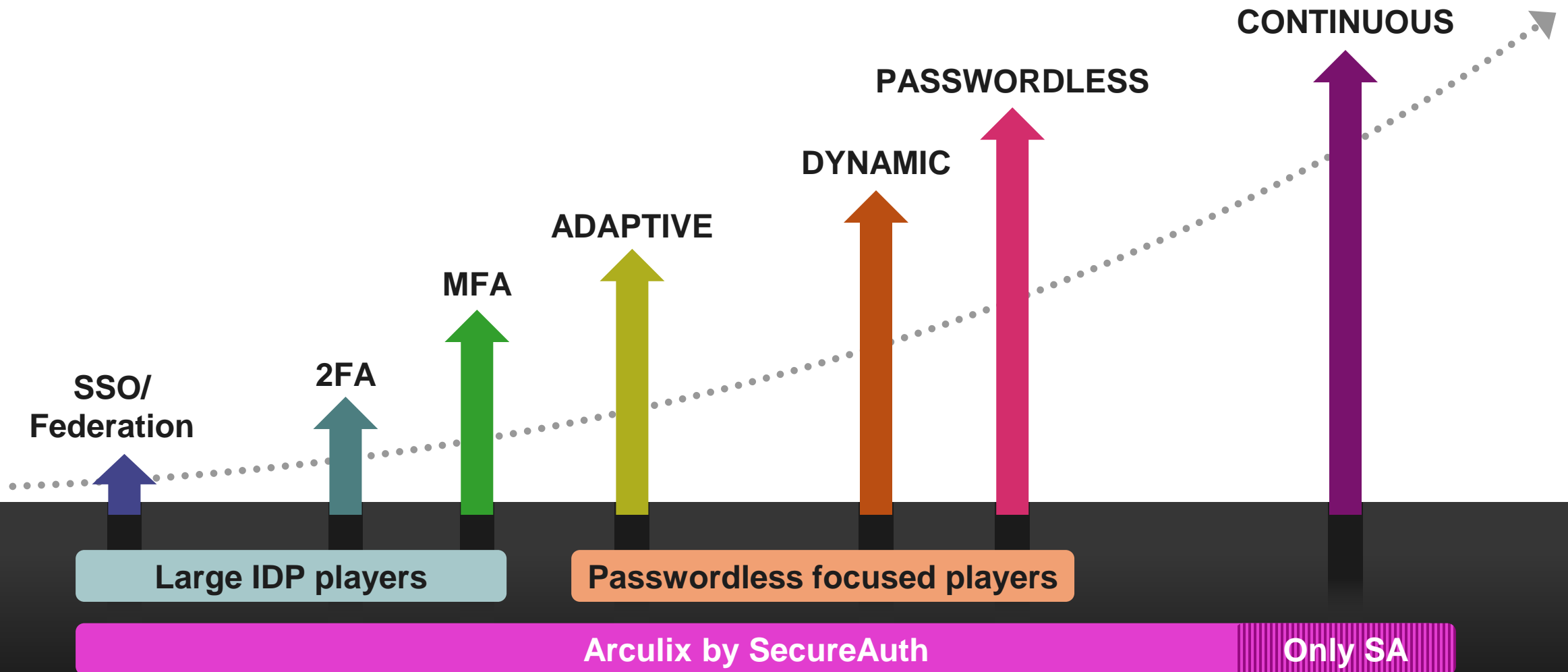


## Adaptive and Continuous Access

# IAM maturity levels – attaining nirvana

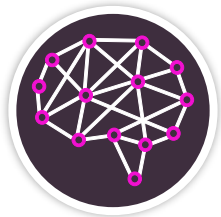


# Achieve IAM maturity



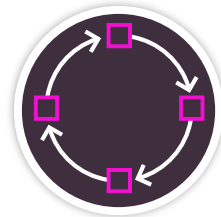


# Benefits of Arculix



## Enable Zero Trust Initiatives

Reduce ATO and other IAM breaches



## Increase User Productivity

Improve productivity, adoption, and engagement with zero password reset issues



## Leverage Actionable Threat Intel

Stay ahead of hackers with real-time threat intelligence



## Reduce Cost of Operations

Reduce help desk calls & simplify policy creation for complex environments



## Integrate & Scale Efficiently

Provide scalability & visibility for all apps, FIDO servers, Mobile SDKs, REST APIs



We have a unified MFA solution across all our applications and use cases while delivering a secure and seamless user experience for our **25,000 global users.**”

**Information Security Architect**

**Unisys**



SecureAuth’s Arculix solution seems to have the right vision that goes **beyond passwordless** to adaptive, continuous authentication that’ll allow organizations a strong security posture while having a frictionless user experience.”

**Tomás Maldonado, CISO**

**NFL**



Our physicians need to approve electronic RXs of controlled substances in seconds, both safely and securely. SecureAuth help us achieve this in **under five seconds.**”

**Senior Director, Enterprise Architecture**

**Scripps Health**



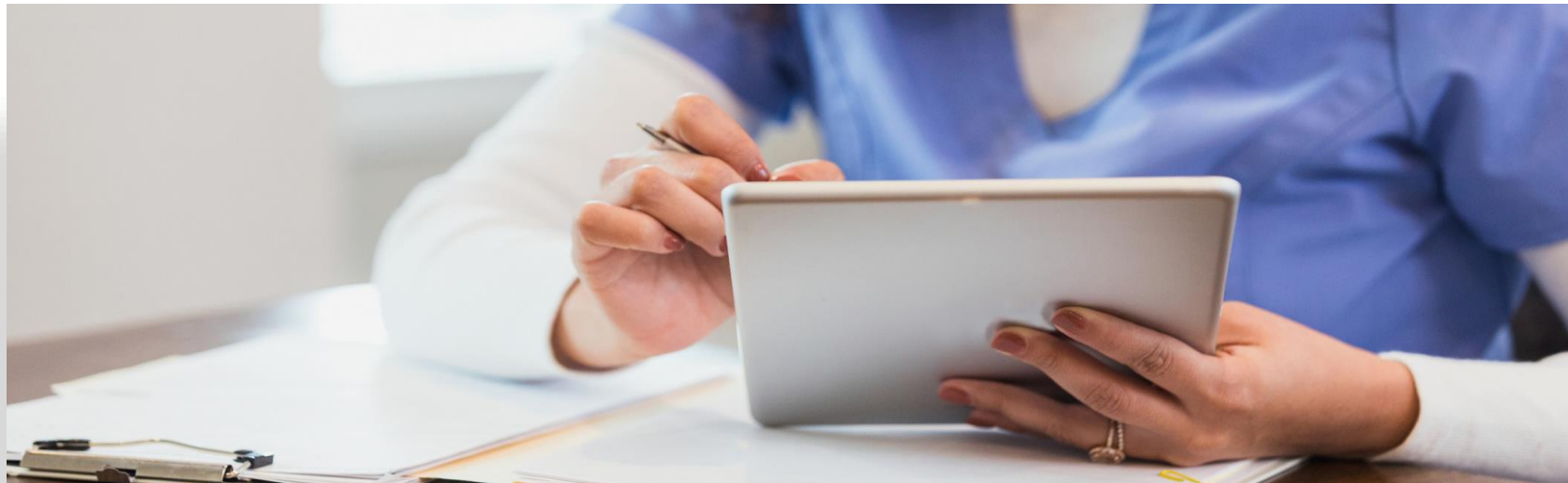


# What does the future hold for IAM?

# Dynamic Identity Policy: Healthcare Use Case

## Charge Nurse v Night Nurse

How do you secure one identity that has multiple affiliations / personas to an organization?  
How do you enforce security with ever-changing roles and responsibilities?



Nurse who works different times of the day has different responsibilities. Night shift doesn't allow access to pharma dispensary, but privileges change if they are assigned as the charge nurse in the afternoon.

# Dynamic Identity Policy: Financial Services Use Case

## Multiple Partner Portals



Financial investment firm works with different partners who have relationships with the customers. The firm can't view all customers at once, as they must log-in into different partner portals for such information.

## Summary

- Comprehensive End-To-End Platform
- The only “true” passwordless, continuous authentication solution
- Extensible – flexible deployment in cloud, on-prem, or hybrid environments
- Augments other IDP platforms
- Frictionless user experience through their digital journey





## User Device ID. Device Trust & Telemetry

Web, Mobile & Workstation



## User Self-Service

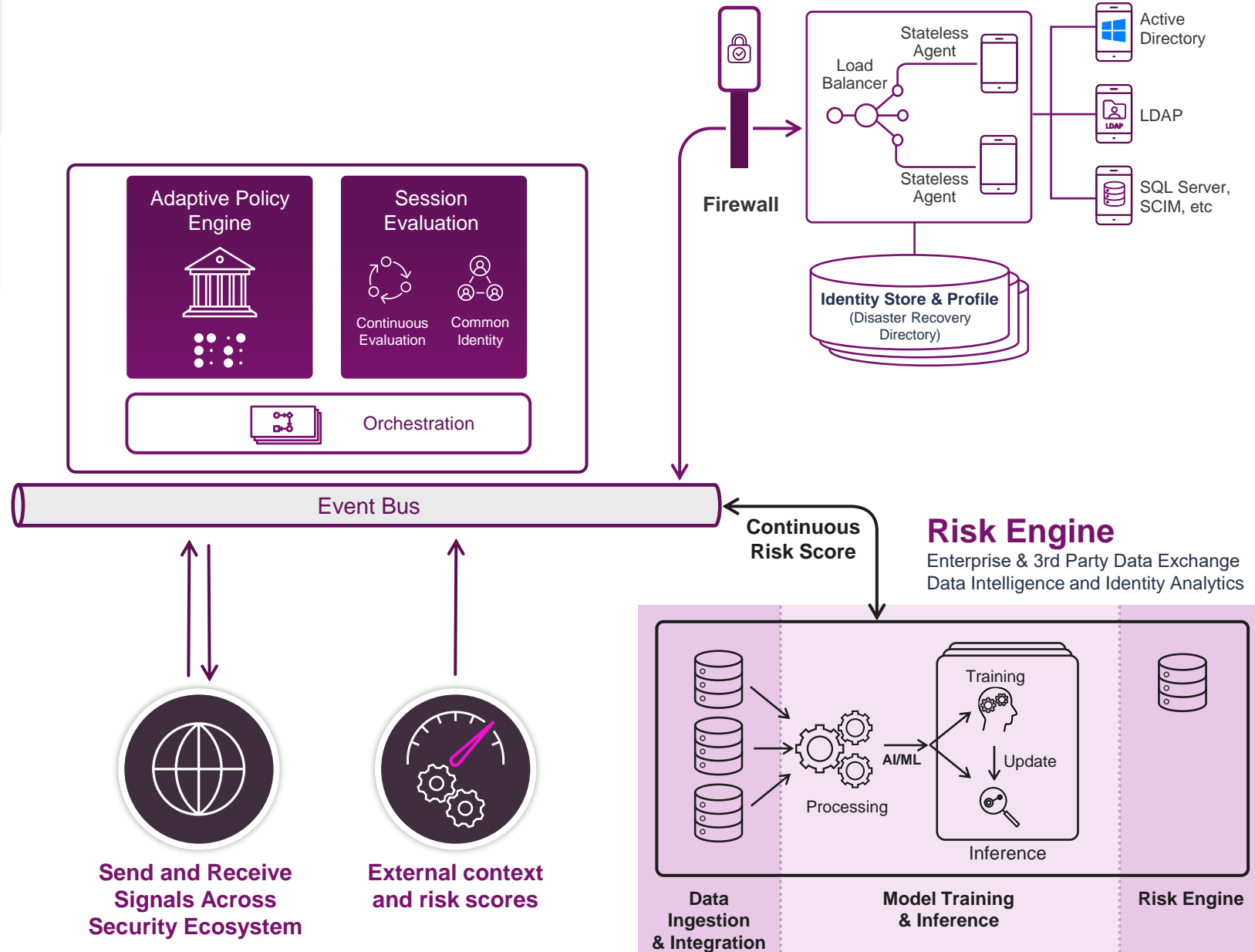
Password Reset

Identity/Auth Awareness

### ONLINE Authenticators



### OFFLINE Authenticators



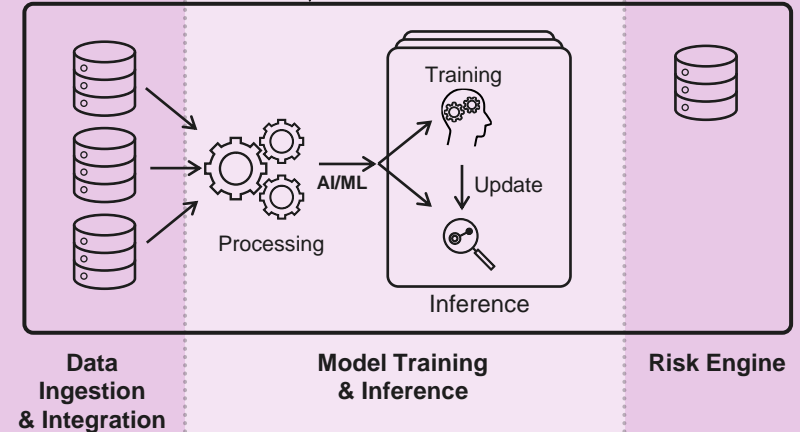
Send and Receive  
Signals Across  
Security Ecosystem

External context  
and risk scores

Continuous  
Risk Score

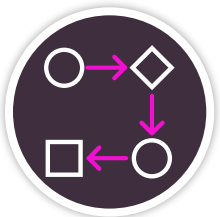
## Risk Engine

Enterprise & 3rd Party Data Exchange  
Data Intelligence and Identity Analytics



# Role of Orchestration in the Arculix / SecureAuth solution

## Enrollment

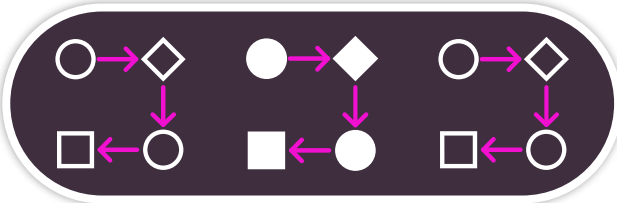


Enrollment flow selected by configuration and potentially customized

## Pre-authentication

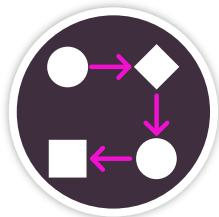


Policy and Analytics enabled contextual assessment



Authentication journey determined by policy and analytics based on risk and environmental context – including whether to allow SSO

## Authentication



Execution of authentication journey as defined with the configured flexibility of which authenticators and number of factors required

## Post - authentication



Authorization and related flows as needed

## Event bus

### Identity Orchestration

AI/ML    Inference Engine    Threat Intelligence

**Adaptive Engine**

OIDC    SAML    WebAuthn / CTAP

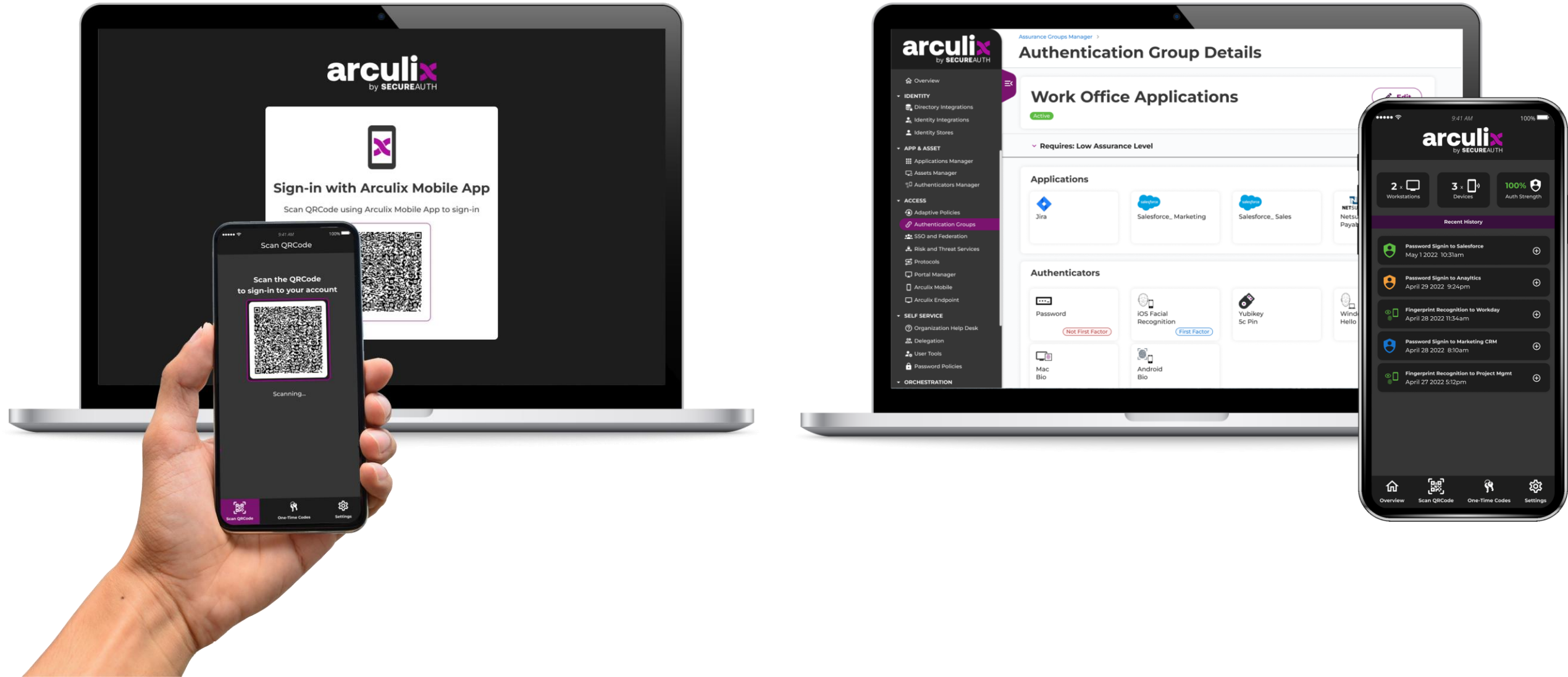
**Access Protocols**

OIDC    SAML    WebAuthn / CTAP

**Access Protocols**



# Get a **Sandbox** version of Arculix today



# Q&A



Donovan Blaylock, II  
Director, Solutions Engineering

